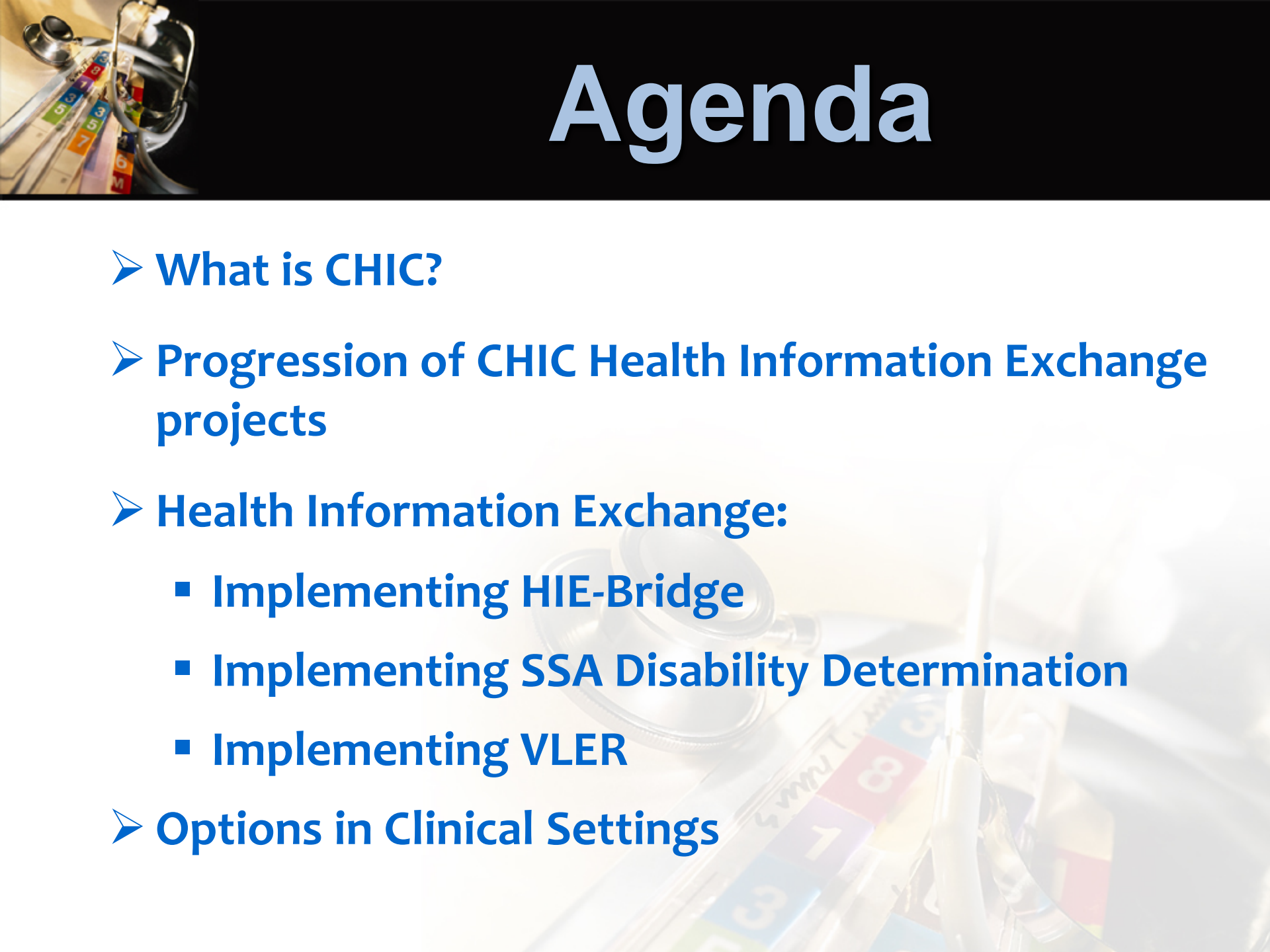


Health Information Exchange Building and Utilizing

*Cheryl M Stephens, MBA, PhD
Northern Minnesota Network
May, 3 2012*

A stethoscope is positioned in the top left corner, with its chest piece resting on a keyboard. The keyboard keys are brightly colored in shades of blue, green, yellow, and red. The background is a soft, out-of-focus light blue and white gradient.

Agenda

- **What is CHIC?**
- **Progression of CHIC Health Information Exchange projects**
- **Health Information Exchange:**
 - **Implementing HIE-Bridge**
 - **Implementing SSA Disability Determination**
 - **Implementing VLER**
- **Options in Clinical Settings**

History of HIE-Bridge™

2006

2007

2008

2009

2010

2011

Secure eMail

RHIO Portal

HIMSS/GSA Single Sign-on

RLS Development

NHIN Trial Implementation Demos



Implementation

HIO
Certification

RLS Go Live

SSA Disability

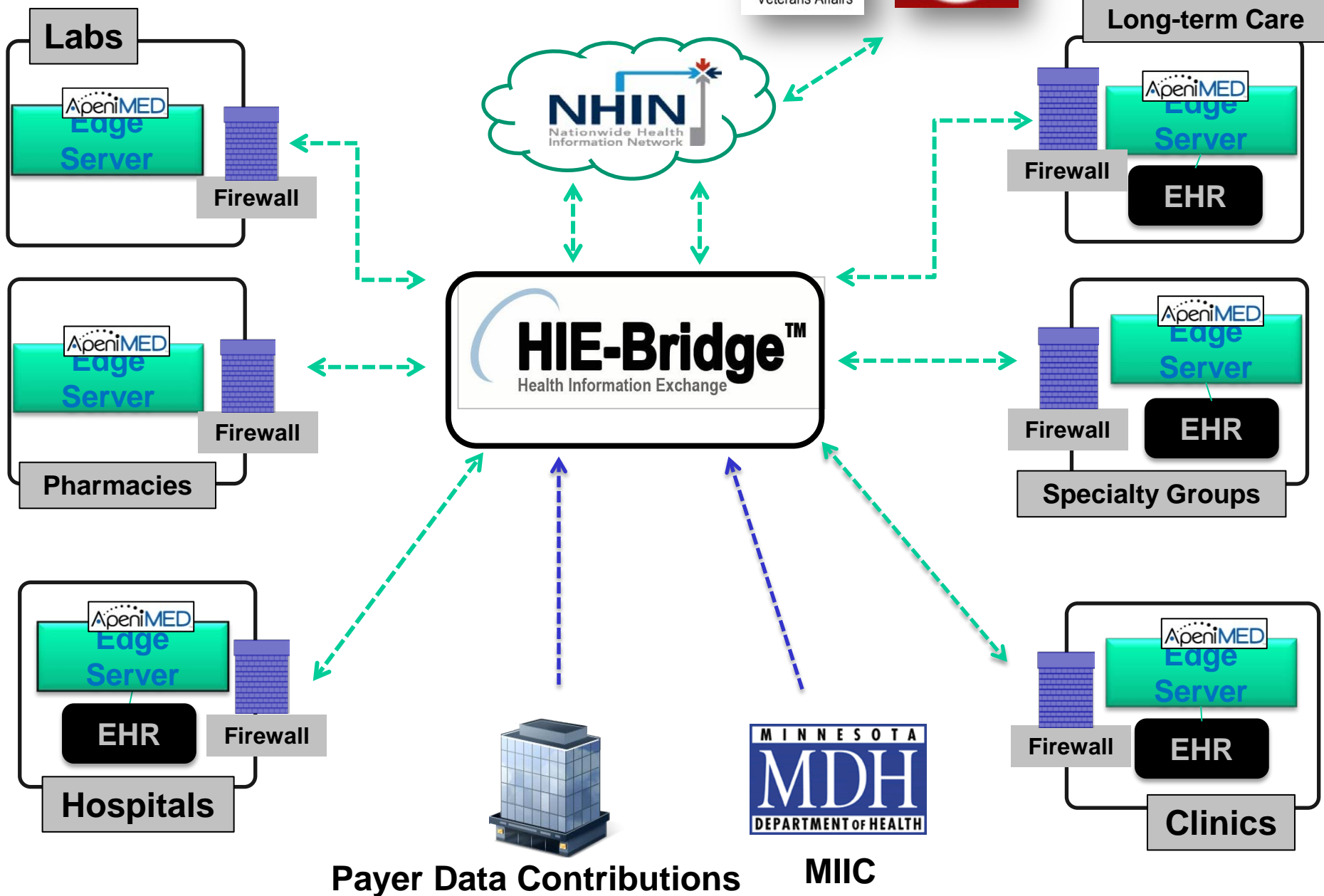
VLER

A close-up photograph of a silver stethoscope resting on a computer keyboard. The stethoscope's chest piece is positioned over the keys, and its tubing extends towards the top left corner of the frame. The keyboard keys are visible, with some colored keys like green, blue, and red. The background is dark, making the metallic stethoscope stand out.

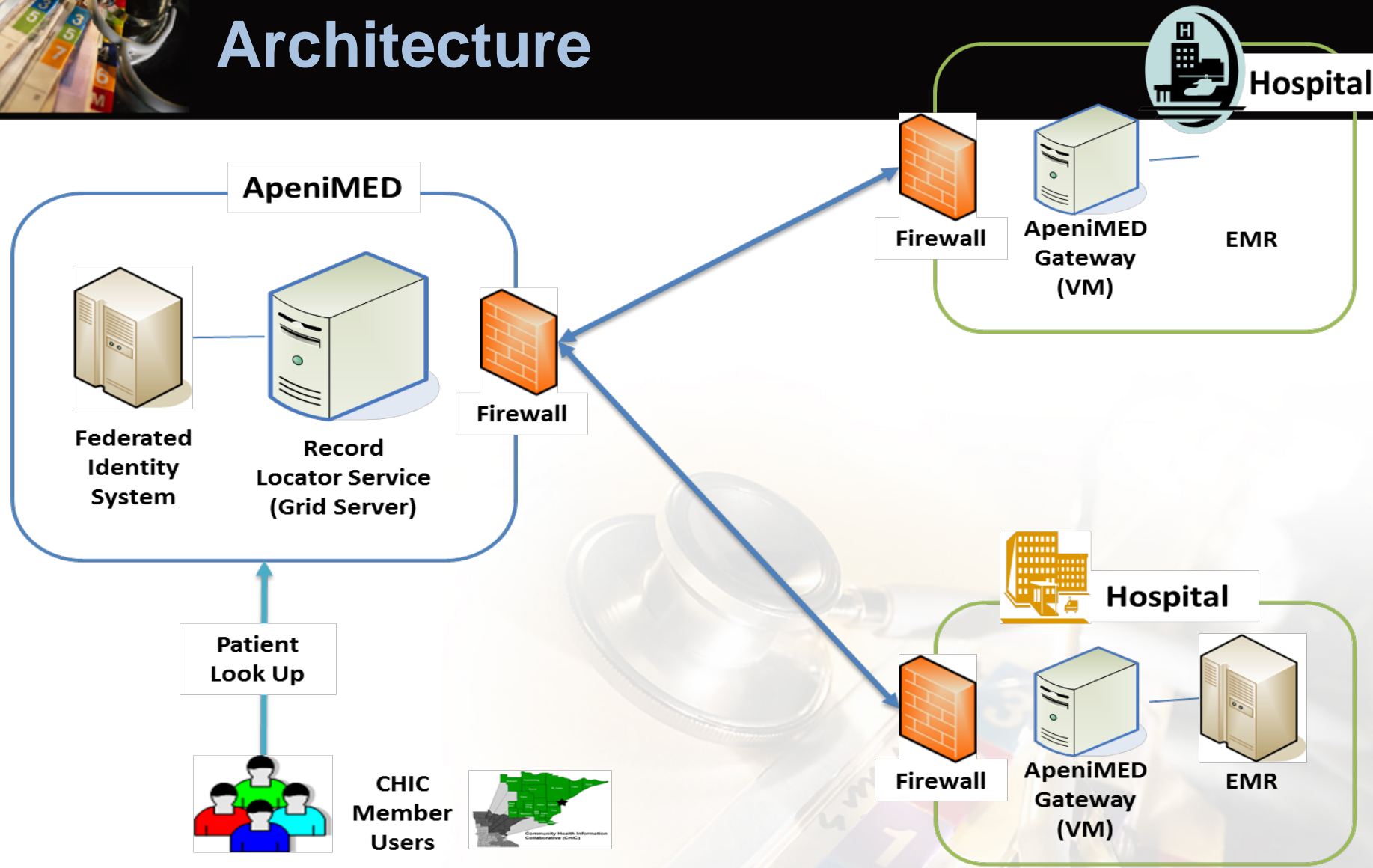
What is HIE-Bridge™

- An **Application** to allow **authorized users** to **query for** and **retrieve clinical information** from **remote systems**
- A **Network of systems** sharing clinical health information
- The only **Certified health information exchange** in Minnesota

HIE-Bridge Network

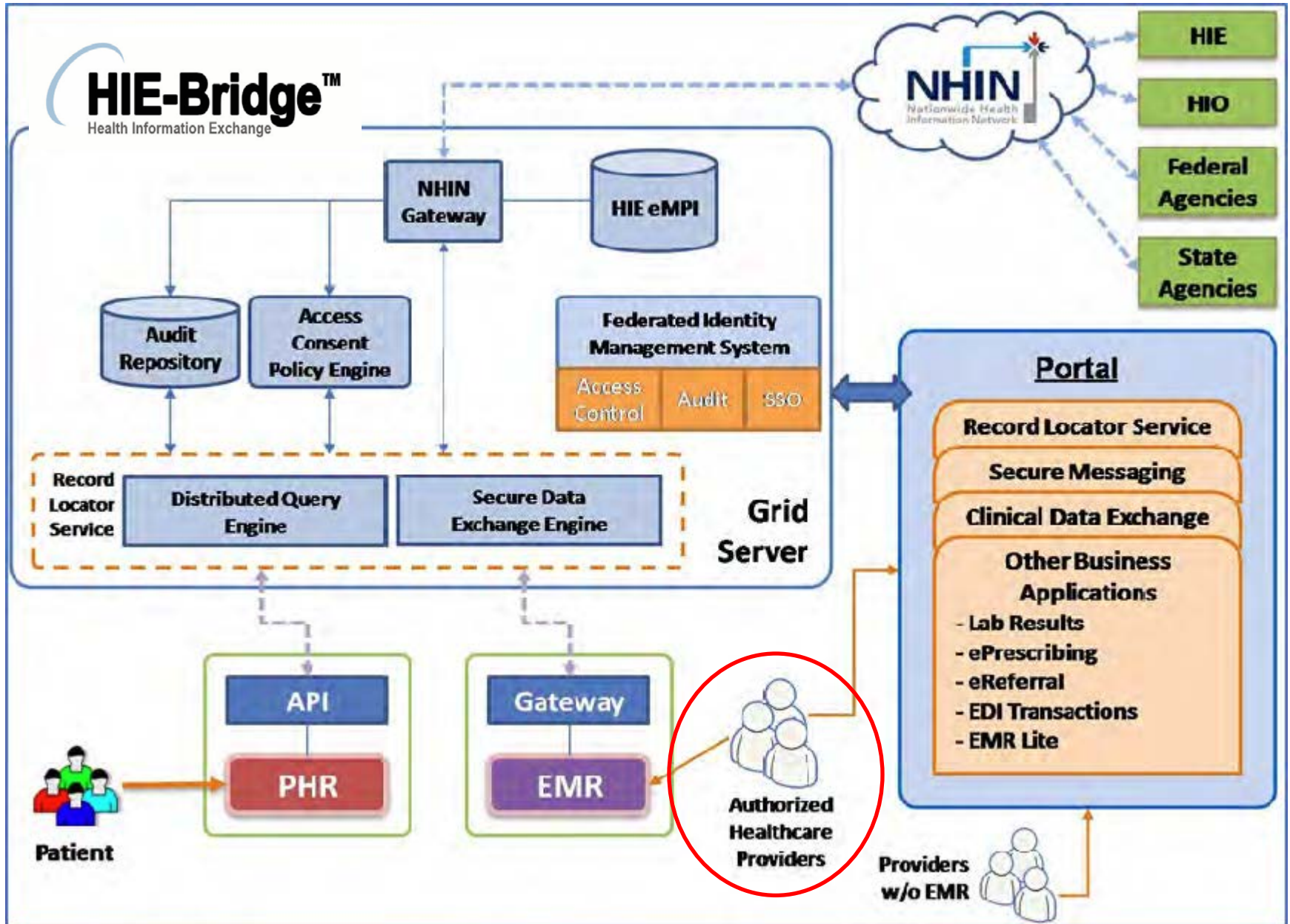


Federated Record Locator Service Architecture



HIE-Bridge™

Health Information Exchange



A stethoscope is positioned in the top left corner, with its chest piece resting on a computer keyboard. The keyboard keys are visible, with some colored keys like '5', '6', '7', '8', and '9' being prominent. The background is a soft, out-of-focus image of a desk with a stethoscope and keyboard.

Implementation

➤ Technology

- Record Locator Service
- CCD Exchange

➤ Agreements

- Licensing
- BAA
- Trust – Data Exchange and Support Agreement

➤ Training

- Users
- Admission/Reception

➤ Consent Process

➤ Communication

A stethoscope is positioned over a computer keyboard, symbolizing the intersection of healthcare and technology. The background is a soft-focus image of the same scene.

Implementation

Challenges:

- **Proprietary HIE's (Epic)**
- **Costs**
 - CCD On-boarding
 - EHR Integration (Button)
- **Changing/Confusing strategies**
 - Connect
 - Direct
- **Reporting Requirements/Time**

A stethoscope is positioned in the top left corner, with its chest piece resting on a keyboard. The keyboard keys are visible, with some colored keys (green, blue, red, yellow) showing numbers and symbols. The background is a soft, out-of-focus image of a desk with a stethoscope and keyboard.

SSA Implementation

Goals:

- Streamline process for Disability Determination
- Faster Determinations – faster benefits
- Less Paperwork

3 Major Milestones:

- Sample SSA CCD
- Replicate 50 actual CCDs
- Production Success



SSA Implementation

Successes:

- **Milestones Accomplished**
- **Production: September 17, 2011**
- **300+ Successful Determinations / 70+% Success**
- **Faster Turnaround**
- **Less Paperwork**

A background image showing a stethoscope and a computer keyboard. The stethoscope is in the foreground, and the keyboard is visible in the background. The overall theme is healthcare and technology.

SSA Implementation

Challenges:

- **SSA CCD**
- **Multiple Players – Coordination/Problem Resolution**
 - 3 hospital systems
 - 2 developers
 - 1 technical support (SISU)
- **Patient Confidentiality**
- **Patient Authorization (827)**



VLER Implementation

Goals:

- Share Vet's Clinical Information
- Improve Quality of Care

Strategies:

- Identify 'common' patients
- 2 Pre-Authorizations
- NwHIN Connection
- Patient Correlation



VLER Implementation

Successes:

- Production: September 30, 2011
 - 5 month implementation
- 2000+ Vets signed up

Challenges:

- Correlation Requirements
- EHR Integration
- Expansion



Options in Clinical Settings

- **Basic HIE Services-** For those settings that do not have EHRs or are not capable of exporting a CCD for exchange purposes.
 - An authenticated user will access the HIE-Bridge Portal and through the Direct protocols can look up a specific provider's Direct address to send or request patient information to a known entity.
 - Examples:
 - A specialist is requesting the referral documentation from a primary care (PCP) or long-term care provider.
 - A dentist needs to know the allergies or medication her patient is on before prescribing an antibiotic prior to oral surgery so asks the patient's PCP for the list.



Options in Clinical Settings

- Classic HIE Services – For those that wish to query the RLS and view, print or exchange CCDs with other HIE-Bridge Participating Organizations.
 - Authorized user accesses HIE-Bridge Portal and sends a query to the system using the Connect protocols or can send a Direct message to a known entity.
 - Emergency Department needs to know allergies, medications and diagnosis codes for an unconscious, but identified, patient just arriving by ambulance.
 - Primary Care provider is referring a patient to a Cardiologist for work-up. Sends request with an attached CCD containing physician notes, most recent laboratory results and today's vitals to assist the Cardiologist.



Options in Clinical Settings

- **Federal Exchange HIE Services** – For those that wish to expand their exchange options beyond the Classic level to include exchanging CCDs with federal agencies under CHIC’s Data Use and Reciprocal Support Agreement with the Nationwide Health Information Network (NwHIN Exchange).
 - This includes all of the services included in the Basic and Classic offerings - Direct and Connect with HIE-Bridge participating organizations.
 - Plus:
 - Responding to SSA queries for patient information
 - Exchanging patient information with VA providers
 - Electronic submission of medical documentation (esMD) Program for use in CMS review for improper payments.



Thank you!

Cheryl M Stephens, MBA, PhD

President and CEO

cstephens@medinfosystems.org

Community Health Information Collaborative

218.625.5515

